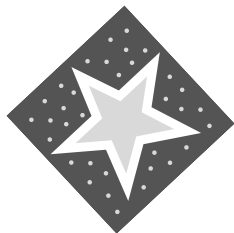
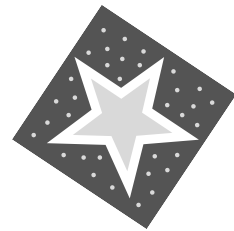
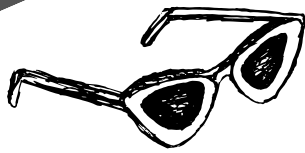
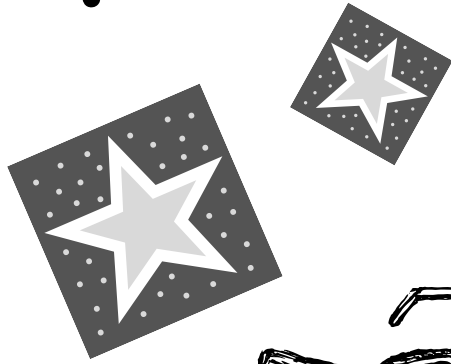
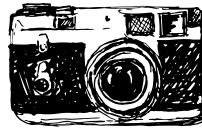


COLORING ACTIVITY

POSTCARDS

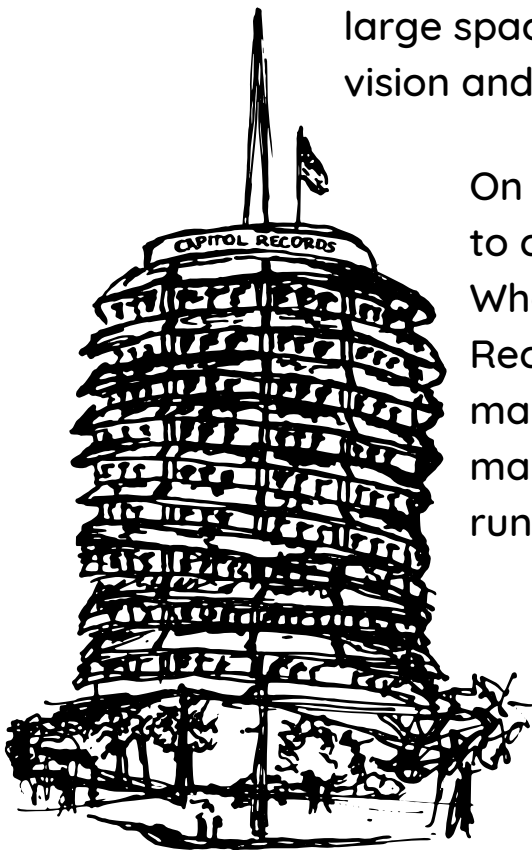




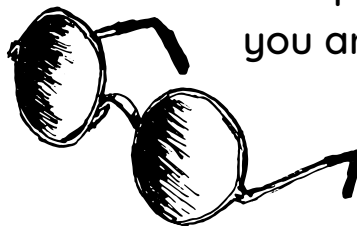
We love postcards! Postcards appeared as early as the 1840's, and over the years took many shapes and styles. They can provide great insights into a place, especially how an area can change over the years. At Hollywood Heritage we use them to track the ways the community transforms decade to decade.



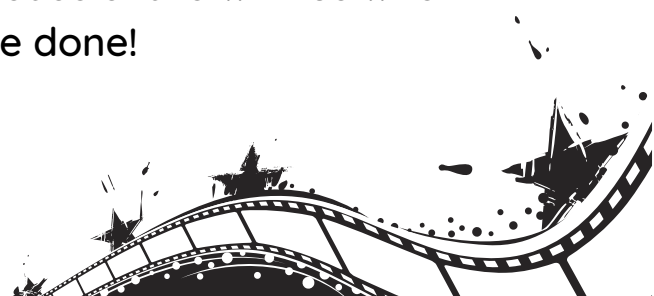
One of the most iconic styles of postcard started to appear in 1931, thanks to German born painter Curt Teich. His linen-style postcards depicting positive and inspired views of the American landscape became hugely popular. Part of his unique style was the "large letter" postcard, where landmarks and highlights of a place were depicted in the large spaces of the lettering. Although copied by many, his vision and style started a trend still thriving today.



On the next page we created a blank postcard for you to create your own large letter postcard of Hollywood! What will you include? The Chinese Theatre? The Capital Records Building? Musso and Franks? There are so many historic spots to choose from. So grab your pens, markers and colored pencils and let your imagination run wild.

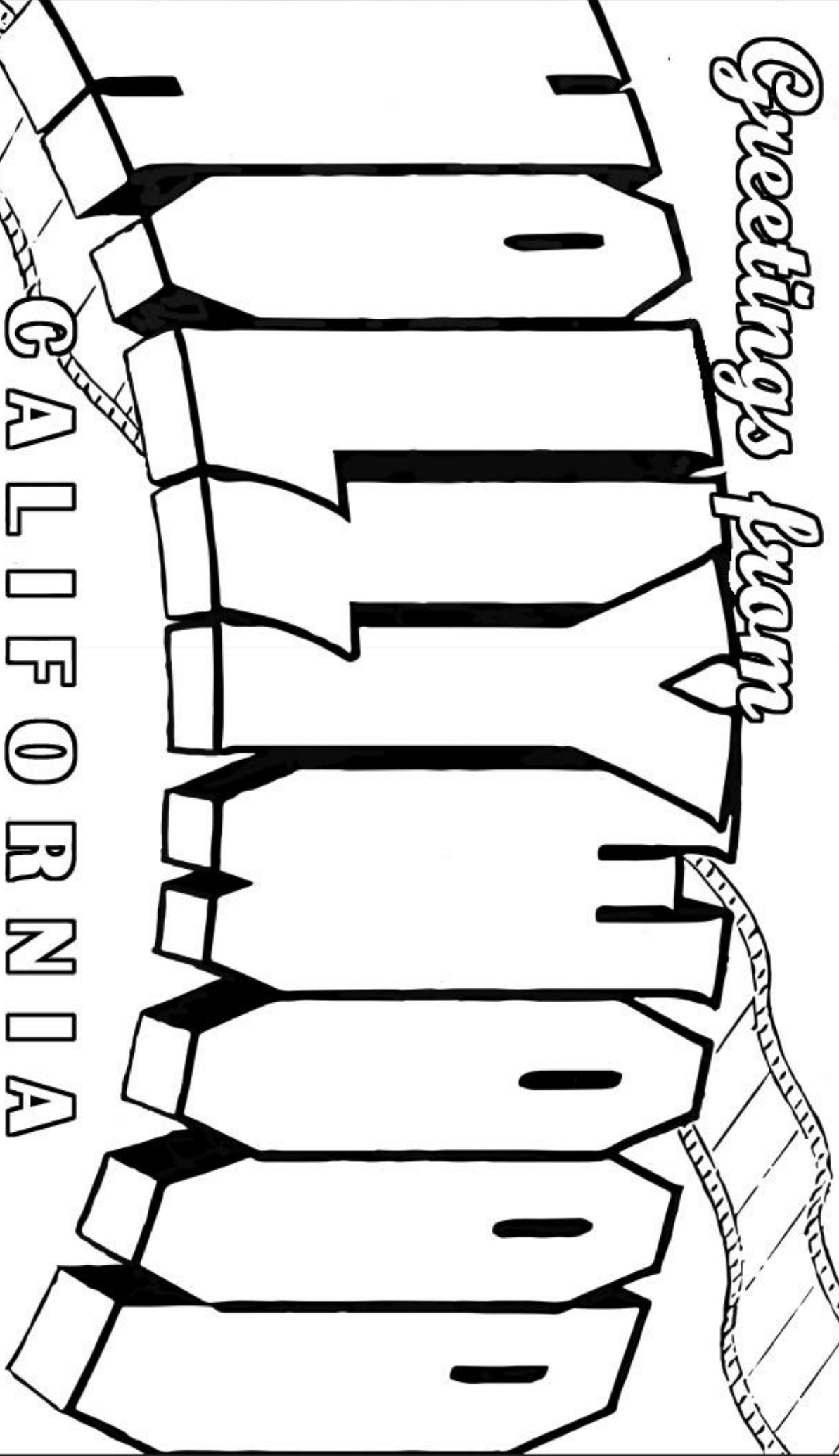


Also please share with us when you are done!



Greetings from

CALIFORNIA



WANT TO CREATE YOUR OWN?

Step 1

With a pencil, outline the letters of your chosen location on a sheet of paper. Make sure there will be enough space to draw within the shapes. Tip: Use a ruler to measure the spacing and size of your letters. You can also use the ruler or another straight edge to make the lines.

Step 2

Think about what makes your city iconic and what you like about it. Sketch your ideas within the letters. You might consider using each shape to create a different scene or the entire place-name to depict one continuous image.

Step 3

Once you have finalized your sketch, add colors. With a dark pencil or pen, re-trace the letters to make the outlines bold. Erase any pencil marks from your sketching.

Optional: Add shadow boxes to each letter to create dimension on your letter scenes.

Step 4

Finalize your letter scenes with additional details. Think about blending and color mixing when shading in your scenes.

RESOURCES

- 1) Article on Curt Teich from [The Smithsonian Magazine](#).
- 2) Design your own large letter postcards with [Spoon Graphics](#).
- 3) Hollywood's Historical Cultural Landmarks from [LA City Planning](#).

